

#5

AUG

\$0.00 FREE

GUARDIANS OF ROADWAY SAFETY

# THE SUPERHERO SAFETY SQUAD

BACK 2 SCHOOL



# TIPS FOR BACK TO SCHOOL SAFETY!

#1

**BE ON THE LOOKOUT FOR SCHOOL ZONE SIGNALS AND CROSSING GUARDS** - Always obey the speed limits and crossing guard signals.

#2

**MAKE SURE TO ALWAYS WEAR A BICYCLE HELMET** when biking to school! Always find the safest route to school, and ride with a buddy when you can, there is safety in numbers!

#3

**ALWAYS USE SIDEWALKS AND DESIGNATED CROSSWALKS WHEN WALKING TO SCHOOL.**

Look left, right, then left again for approaching traffic, and never assume drivers see you!

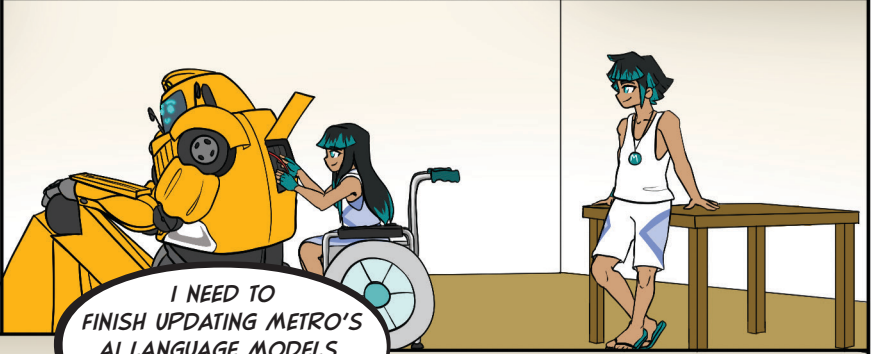
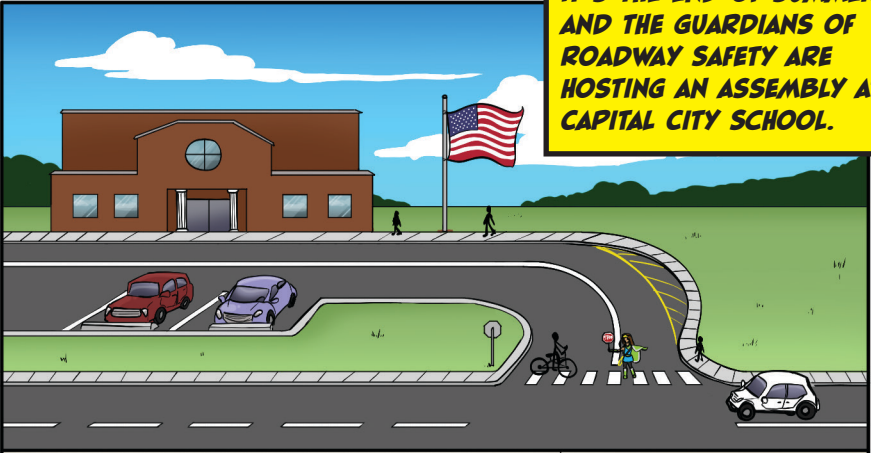
#4

**STAY 5 GIANT STEPS AWAY FROM THE STREET WHILE WAITING FOR THE BUS, AND 5 GIANT STEPS AWAY FROM THE BUS WHEN GETTING OFF.** Once on the bus, find a seat and sit down immediately. It is okay to talk and laugh quietly with friends, but do not scream - it can distract the bus driver.

#5

**ALWAYS PUT ELECTRONIC DEVICES DOWN AND KEEP YOUR HEAD UP.** Whether walking, biking, or getting off the bus, it is important to pay attention to everything happening around you.

**IT'S THE END OF SUMMER  
AND THE GUARDIANS OF  
ROADWAY SAFETY ARE  
HOSTING AN ASSEMBLY AT  
CAPITAL CITY SCHOOL.**



I NEED TO  
FINISH UPDATING METRO'S  
AI LANGUAGE MODELS,  
BUT HE WON'T STOP  
FIDGETING.

YOU GOTTA  
HOLD STILL,  
BUDDY.

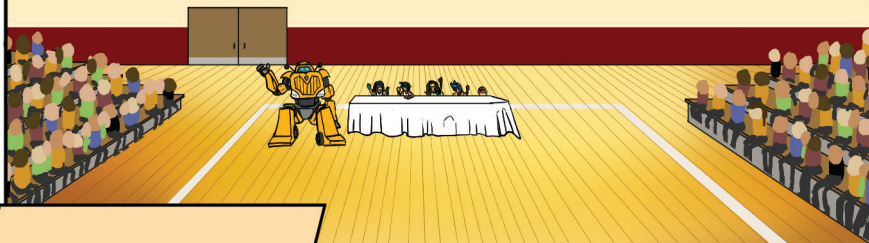
CAN'T I  
HELP. THE  
TICKLES!

**MEANWHILE, THE  
GUARDIAN IS  
OUTSIDE MAKING  
SURE EVERYONE  
ARRIVES AT THE  
SCHOOL SAFELY.**

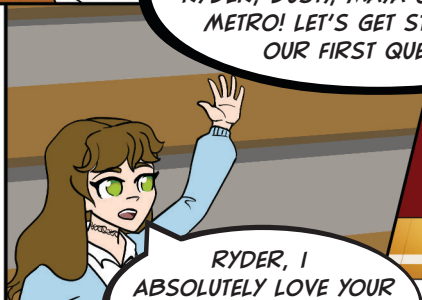
IT LOOKS LIKE  
THE LAST OF THE AUDIENCE  
HAVE ARRIVED. I'D BETTER  
GO IN BEFORE I'M LATE.



**WITH THE SAFETY SQUAD TOGETHER ON STAGE, THE ASSEMBLY IS GETTING STARTED...**



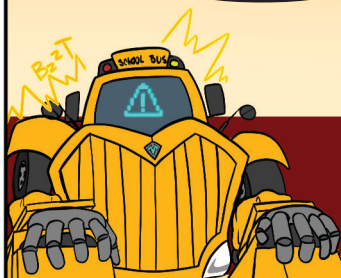
THANK YOU, EVERYONE  
FOR COMING TO TODAY'S SAFETY  
PANEL FEATURING THE GUARDIAN,  
RYDER, DUSTY, MAYA & MATEO, AND  
METRO! LET'S GET STARTED WITH  
OUR FIRST QUESTION.



RYDER, I  
ABSOLUTELY LOVE YOUR  
HAIR! HOW DO YOU NOT  
GET HELMET HEAD?



THANKS!  
UM...FIRST, I'M SURE  
YOU KNOW STYLE IS NO  
EXCUSE TO NOT WEAR  
A HELMET...



**SUDDENLY, METRO RECEIVES  
A WARNING SIGNAL!**


OH NO!

WHAT'S  
WRONG?



HIS NEW CHAOS  
SENSOR MUST BE  
MALFUNCTIONING. I KNEW  
HIS UPGRADES WOULDN'T  
BE READY IN TIME.

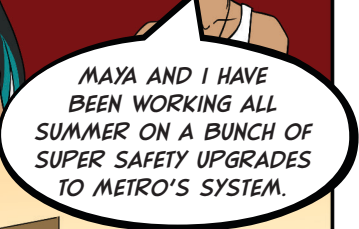




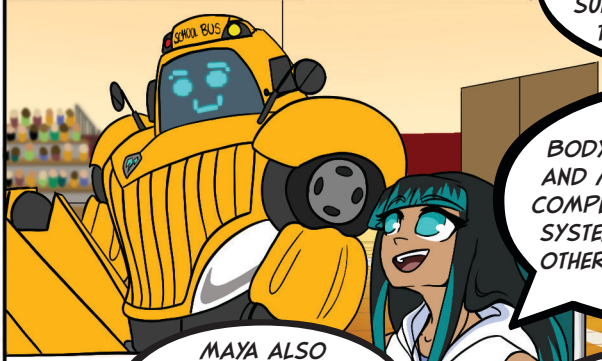
METRO, YOU LOOK REALLY DIFFERENT. DID YOU GET SOME WORK DONE?



MATEO AND I CAN TAKE THIS ONE!




MAYA AND I HAVE BEEN WORKING ALL SUMMER ON A BUNCH OF SUPER SAFETY UPGRADES TO METRO'S SYSTEM.




WE'VE UPDATED HIS BODY PANELS TO BE BRIGHTER AND MORE AERODYNAMIC, AND COMPLETELY REBUILT HIS LIGHTING SYSTEM TO MAKE IT EASIER FOR OTHERS ON THE ROAD TO KNOW WHEN TO STOP.



MAYA ALSO UPDATED HIS LANGUAGE AI, SO HE CAN COMMUNICATE BETTER!



I HAVE A QUESTION FOR DUSTY - SINCE YOU'RE LIKE, MADE OF SPACE DUST, DOES THAT TECHNICALLY MEAN YOU'RE AN ALIEN?



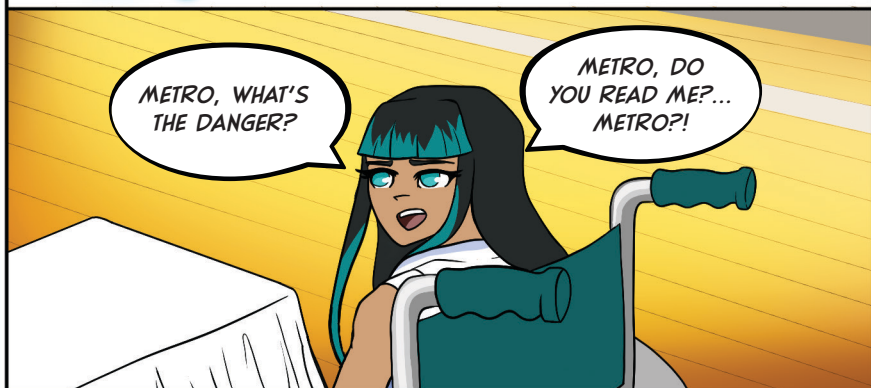
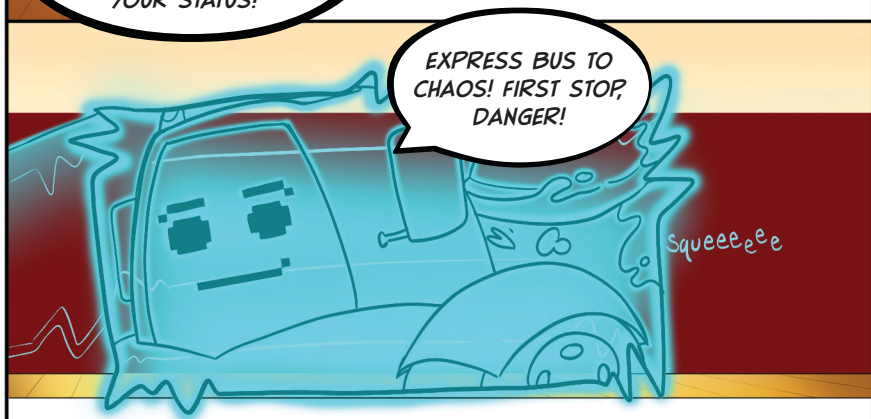
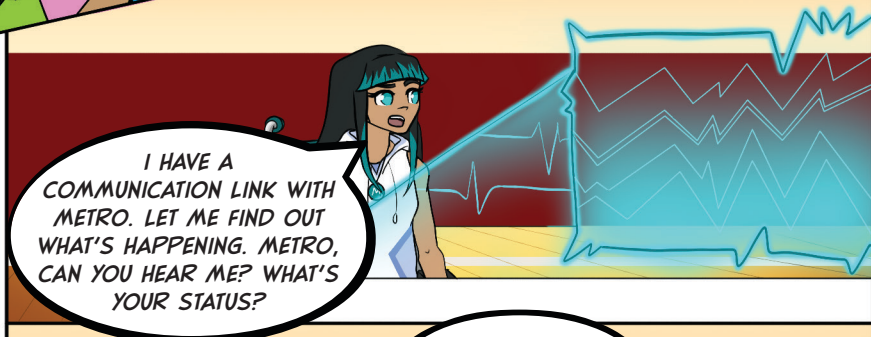
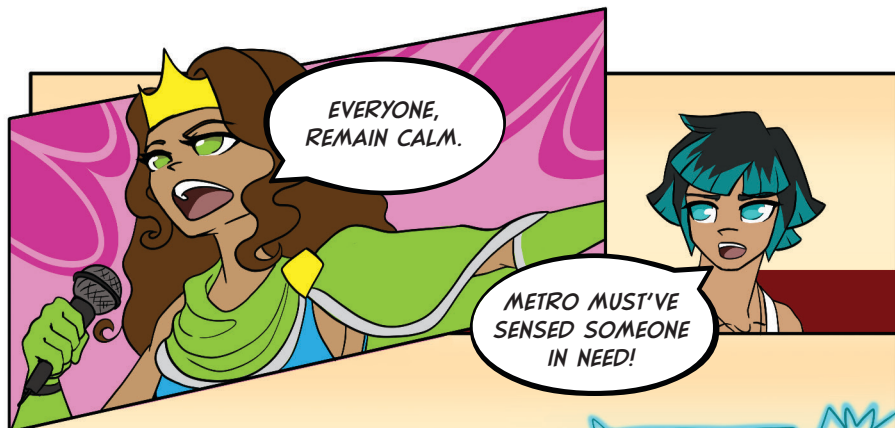
I GUESS THAT WILL REMAIN A MYSTERY!



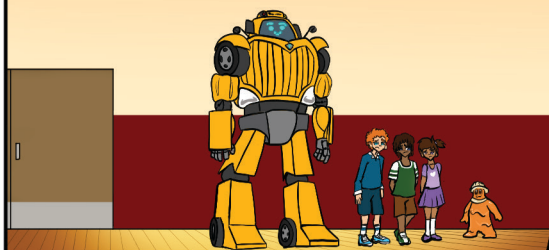
DUSTY— MY SENSORS ARE GOING WILD FROM NEARBY DANGER! WE HAVE TO GO NOW!



**Zoom**



**AFTER SEVERAL TENSE MINUTES, METRO AND DUSTY RETURN TO THE AUDITORIUM...**



IT'S THE LATE CREW! I SHOULD'VE KNOWN!

WE DIDN'T WANT TO BE LATE! SO WE TOOK A QUICK DETOUR THROUGH A WORK ZONE.

EMPHASIS ON **QUICK**.

IT'S IMPORTANT TO PAY ATTENTION TO ALL ROAD SIGNS AND ACTIVITY.

AND YOUR INTUITION!

TARDINESS IS NO EXCUSE FOR BEING UNSAFE.

IF SOMETHING DOESN'T FEEL SAFE, DON'T DO IT, AND LET A RESPONSIBLE ADULT KNOW OF ANY DANGEROUS CONDITIONS. RIGHT, METRO?

**RIGHT!**

# WORD SEARCH

H R J J C Z K I W N S M J Q M U I X C L  
 M C S V W P Z Y C U R T L I H N P J W G  
 Q S J M R W P M B I C Y C L E I O Z B V  
 S I D U S T Y K Y N P W N F O I B O F B  
 S D C V H Q E Y J S K A K I C K Y R J W  
 A E C H A C R Q C L A X T Y V N V T U Z  
 F W R G R L N B E I X G L M M W D Z P Y  
 E A Q Q B J T F V Y E E C H Y V A S V F  
 T L Z F L S Q P A M M W B L T Y Q L C V  
 Y K H A E L Z T S A P Y I S N C S Q K P  
 S A P Y P V O U V H S S K C J I I Q S B  
 Q R R B D E Y O E C S H Q H W D A M R U  
 U R Y K M O W T K G R F G O W U D K P C  
 A M U G A W P Q W M C O R O V U E T I R  
 D S M L T E P Z Y Y P T S L M B S P A R  
 T N S H E Q N Y O M E H M S O I I M X R  
 M P C D O S R P M M X E A W I V M J R M  
 G N O Q M N B H N G F L M K Y N U X S U  
 I L H B L Q U Y T X Y M I K J H G Q Z A  
 W I Y W J G U S S L O E L S X H E L V E  
 A Z K L J A U Z K T D T Z E T Y B Q D Y  
 A S I O H D N A A D P Q P H B E K I N U  
 I M V C K F X O R O L D G R E O N T Q B  
 U N M Z K K G K N D K I E V P F W D S I  
 I H A D Y F J P M C I D O E O T S V P L  
 W D U C F L T Q S A Y A U A M N T I L M  
 G I Y W B J M X H R Y R N U S A W P U B  
 A X X Z H Z L Q X S O A B Q B Q J F N Z

Bicycle  
 Bus  
 Cars  
 Crossing  
 Dusty  
 Guardian

Helmet  
 Listen  
 Look  
 Mateo  
 Maya  
 Metro

Rules  
 Ryder  
 Safety Squad  
 School  
 Sidewalk  
 Walk



# COLOR THE LETTERS

COLOR THE LETTERS THAT HAVE NUMBERS IN THEM. MATCH THEM TO THE NUMBERS IN THE SPACES BELOW TO DECODE THE PHRASE.

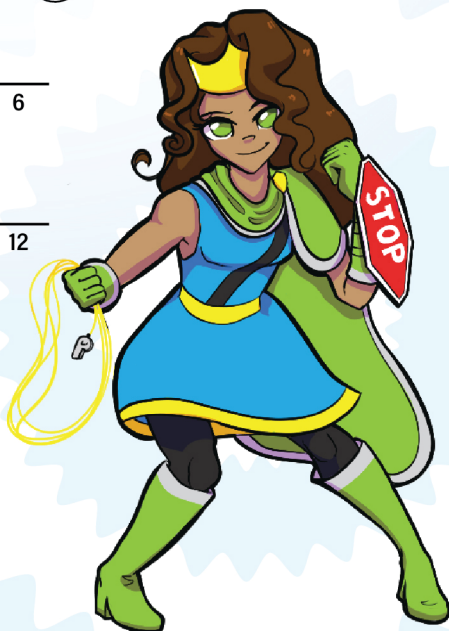


1      2      3      4      5      6

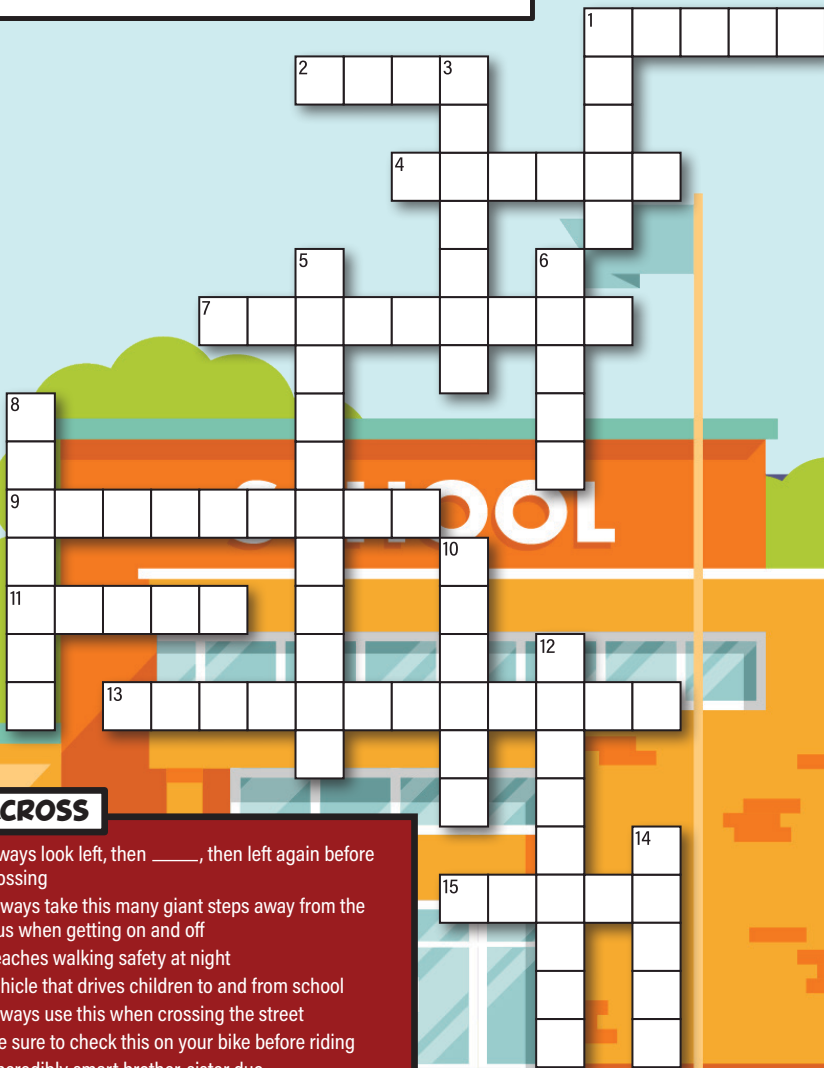
7      8      9      10      11      12

13      14      15      16

17      18      !



# CROSSWORD PUZZLE



## ACROSS

1. Always look left, then \_\_\_\_\_, then left again before crossing
2. Always take this many giant steps away from the bus when getting on and off
4. Teaches walking safety at night
7. Vehicle that drives children to and from school
9. Always use this when crossing the street
11. Be sure to check this on your bike before riding
13. Incredibly smart brother-sister duo
15. Transforming bus superhero

## DOWN

1. Teaches children about bicycle safety
3. Set a good \_\_\_\_\_ for younger students and siblings by following safety rules
5. This hero protects the crosswalk and makes sure children get to school safely
6. Alien from space who turned into a safety superhero
8. Two-wheeled vehicle with pedals
10. Always wear this when riding your bike
12. Pay close \_\_\_\_\_ to your surroundings, don't be distracted by cell phones or toys
14. Map out a safe \_\_\_\_\_ to school with your parents before walking or biking to school

**GIVE THE GUARDIANS  
A NEW LOOK!**



# ANSWER KEY

