

#1 OCT  
\$0.00 FREE

GUARDIANS OF ROADWAY SAFETY

# Sally + DOT



# UNDERSTANDING BLIND PEDESTRIANS

## CROSSING AT SIGNALIZED INTERSECTIONS

MANY PEDESTRIANS MAY BE UNAWARE OF JUST HOW BLIND PEDESTRIANS ARE ABLE TO NAVIGATE PEDESTRIAN TRAFFIC. BELOW ARE JUST A FEW OF THE STEPS BLIND PEDESTRIANS TAKE, SO BE AWARE!

### 1. LOCATING THE STREET | PEDESTRIANS

WHO ARE BLIND DETERMINE WHEN THEY REACH A STREET USING A COMBINATION OF CUES, SUCH AS THE CURB OR SLOPE OF A RAMP, TRAFFIC SOUNDS, AND DETECTABLE WARNINGS.

### 2. STREET RECOGNITION | THEY THEN RECOGNIZE

WHICH STREET THEY HAVE COME TO. MANY DEVELOP A MENTAL MAP AND TRACK WHERE THEY ARE WITHIN IT DUE TO THE INFORMATION NOT ALWAYS BEING PROVIDED IN AN ACCESSIBLE FORMAT. THEY MAY ALSO SEEK ASSISTANCE FROM OTHERS.

### 3. INTERSECTION ASSESSMENT | THEY ALSO

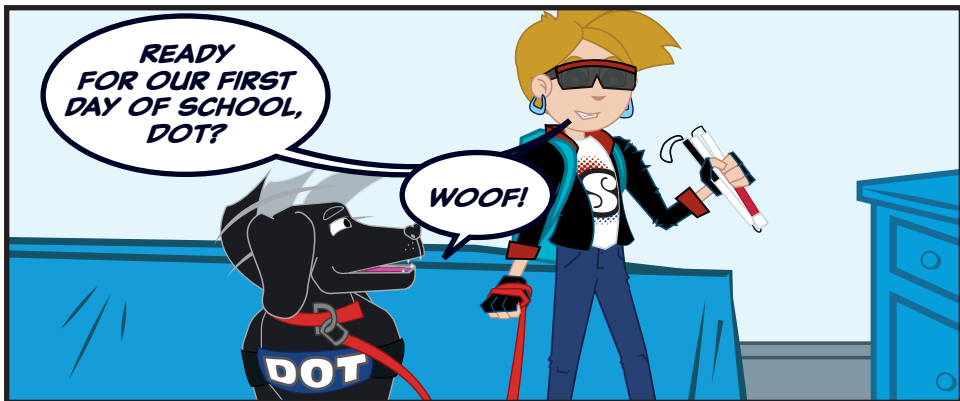
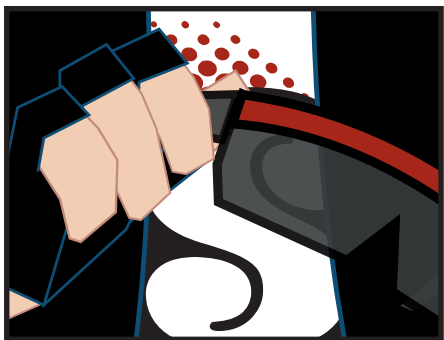
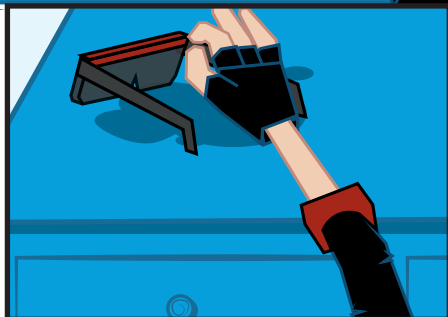
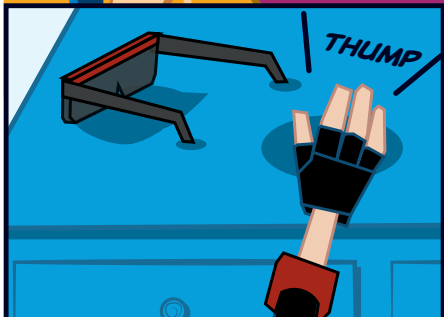
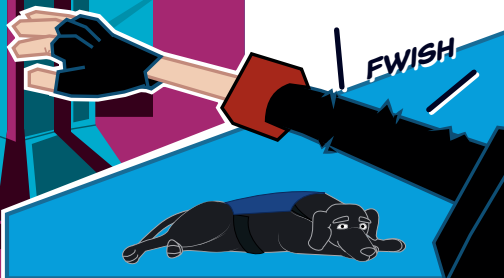
OBTAIN CRITICAL INFORMATION ABOUT THE SURROUNDING INTERSECTION SUCH AS LOCATION OF THE CROSSWALK, DIRECTION OF THE OPPOSITE CORNER, NUMBER OF INTERSECTING STREETS, WIDTH OF THE STREET TO BE CROSSED, AND ANY ISLANDS OR MEDIANS. SOUNDS OF TRAFFIC ALSO HELP TO DETERMINE SOME OF THESE FACTORS.

### 4. CROSS THE ROADWAY | THEY THEN ALIGN

TO FACE TOWARDS THE DESTINATION CURB, DETERMINE THE INTERSECTION IS SIGNALIZED, AND PUSH A BUTTON (WHEN NECESSARY). ONE TECHNIQUE USED BY BLIND PEDESTRIANS IS TO CROSS WHEN THERE IS A SURGE OF THROUGH TRAFFIC ON THE CLOSEST SIDE OF THE STREET PARALLEL TO THEIR DIRECTION OF TRAVEL.



**WE START ON A REGULAR MORNING BEFORE THE FIRST DAY OF SCHOOL AS SALLY GETS READY...**



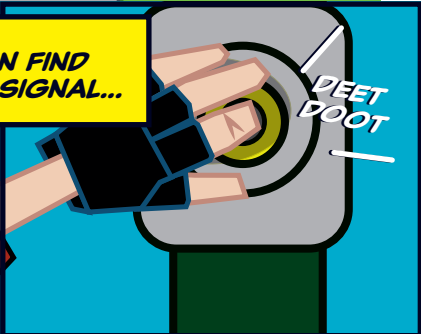
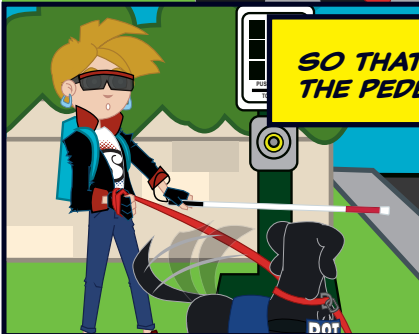
**SALLY'S TRUSTY GUIDEDOG DOT...**

**HELPS GUIDE HER TO THE CROSSWALK...**



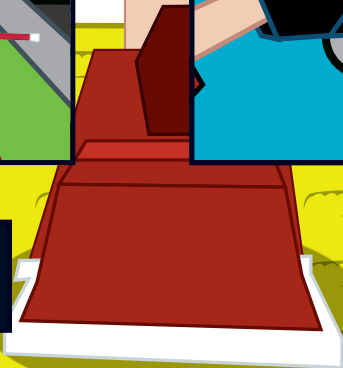
**SO THAT SHE CAN FIND THE PEDESTRIAN SIGNAL...**

**DEET DOOT**



**STEP ONTO THE TRUNCATED DOMES...**

**DEET DOOT**



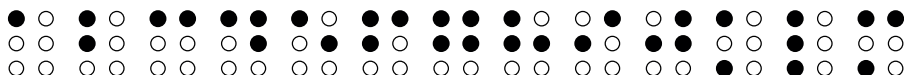
**AND LISTEN CLOSELY FOR ANY SURROUNDING DANGERS.**



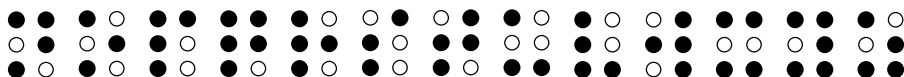
# DECODE THE MESSAGE!

PEOPLE WHO ARE BLIND TYPICALLY USE BRAILLE IN ORDER TO READ STREET SIGNS AND OTHER CRITICAL INFORMATION BY TOUCH. USE THE BRAILLE ALPHABET BELOW TO DECODE THE MESSAGE FROM SALLY!

## The Braille Alphabet

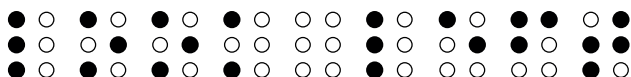


A B C D E F G H I J K L M

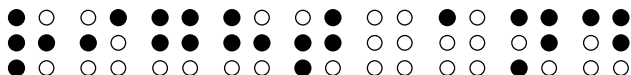


N O P Q R S T U V W X Y Z

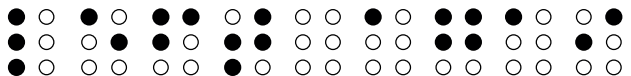
*BEFORE  
CROSSING A STREET, YOU  
SHOULD ALWAYS...*



- - - - -



- - - - -



- - - - -

BE SURE TO TAKE SALLY'S ADVICE IN ORDER TO STAY SAFE WHILE WALKING!



# WORD SEARCH!

CAN YOU SPOT THE SAFETY WORDS BELOW?

A T U U K G V M K C V N S A K  
G C S Y U L I X G H H O A H L  
Y R C I J V A W M P Z I F A A  
M V D E S G J W T I K T E O W  
K E I G S S Y V G E L N T V E  
J B C F T S A P P L P E Y P D  
B L I N D D O G A S E T N G I  
K O O L X L J N R B D T O H S  
U G D X I A G A H A E A W C F  
Y G B S Y I C R O S S W A L K  
D U T E S H K G S J T A Q U X  
I E L K W V J T N O R G S J Y  
N S L Q R H O U X K I A T I Q  
D E N O H U E S K R A O D Z W  
R M T Z F X L X X G N X Q O H

**Safety**

**Blind**

**Guide**

**Signal**

**Crosswalk**

**Listen**

**Cars**

**Assist**

**Sidewalk**

**Access**

**Dog**

**Pedestrian**

**Attention**

**Look**

**Walk**

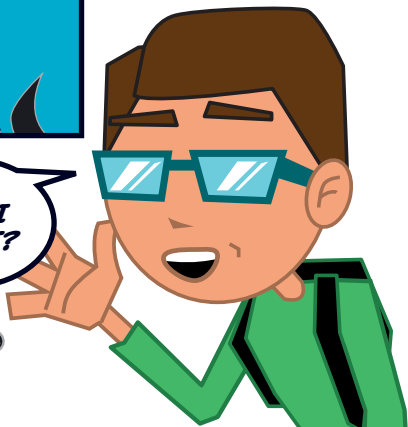


**TWO OTHER CLASSMATES  
GATHER AROUND TO WAIT.**



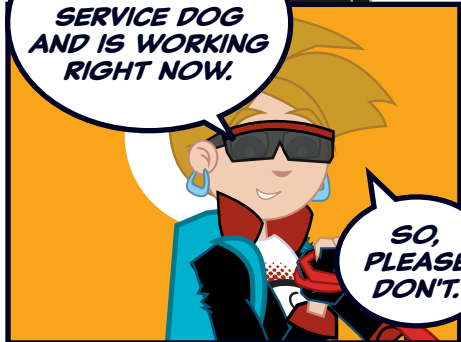
**WOW,  
COOL  
DOG!**

**CAN I  
PET IT?**



**ACTUALLY,  
DOT IS MY  
SERVICE DOG  
AND IS WORKING  
RIGHT NOW.**

**SO,  
PLEASE  
DON'T.**



**OH?  
ARE YOU  
BLIND?**



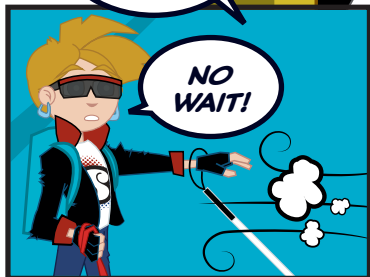
**SIGH**

**OH! WE  
BETTER  
HURRY!**

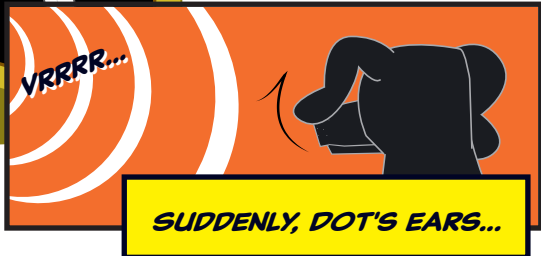


**PREET  
PREET**

**NO  
WAIT!**



**VRRRR...**



**SUDDENLY, DOT'S EARS...**

**PICKED UP ON THE SOUNDS...**

**VRRRR...**



**VRRRRRR**



**OF AN UNATTENTIVE DRIVER!**

**BUT WITH JUST A SUBTLE MOTION...**

**KLING  
KLING**



**DOT COULD WARN SALLY OF THE DANGER!**

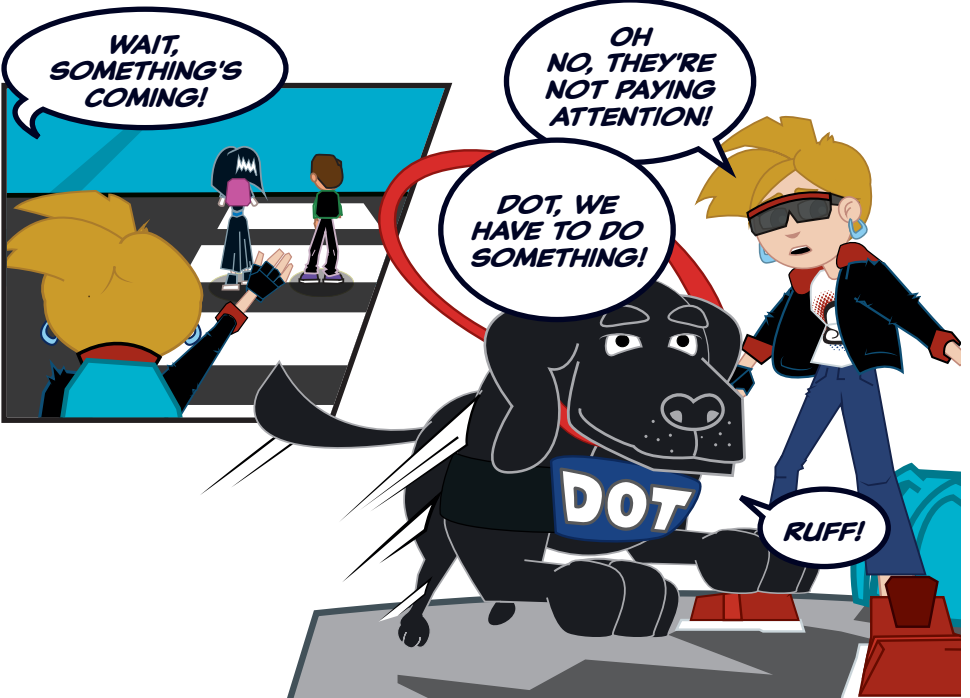
**WAIT,  
SOMETHING'S  
COMING!**

**OH  
NO, THEY'RE  
NOT PAYING  
ATTENTION!**

**DOT, WE  
HAVE TO DO  
SOMETHING!**

**RUFF!**

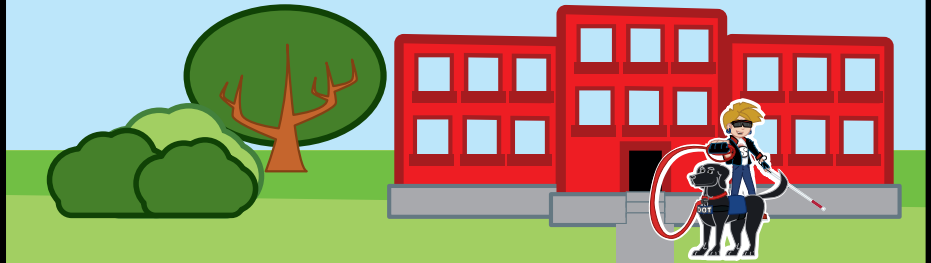
**DOT**





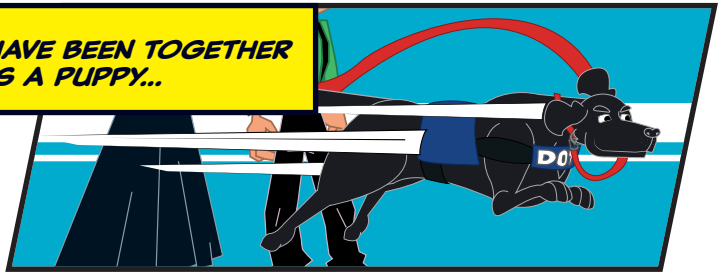
# NAVIGATE THE MAZE!

HELP GUIDE SALLY AND DOT TO SCHOOL SAFELY!  
REMEMBER TO USE THE SIDEWALK AND CROSSWALKS ONLY!

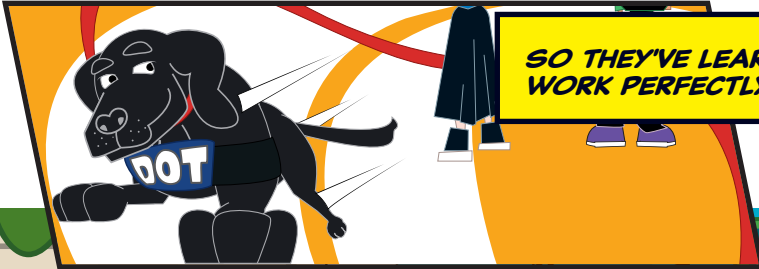


TIP: REMEMBER TO FOLLOW SIGNS AND ROAD MARKINGS  
WHILE MOVING ALONG THE SIDEWALK!

**SALLY & DOT HAVE BEEN TOGETHER SINCE DOT WAS A PUPPY...**



**SO THEY'VE LEARNED TO WORK PERFECTLY IN SYNC...**



**TO KEEP THEMSELVES AND OTHERS SAFE!**

**ARE YOU BOTH OKAY?**

**YEAH, I GUESS WE WEREN'T LOOKING!**

**YOU SEE, I'M BLIND...**

**NO, I GUESS NOT!**

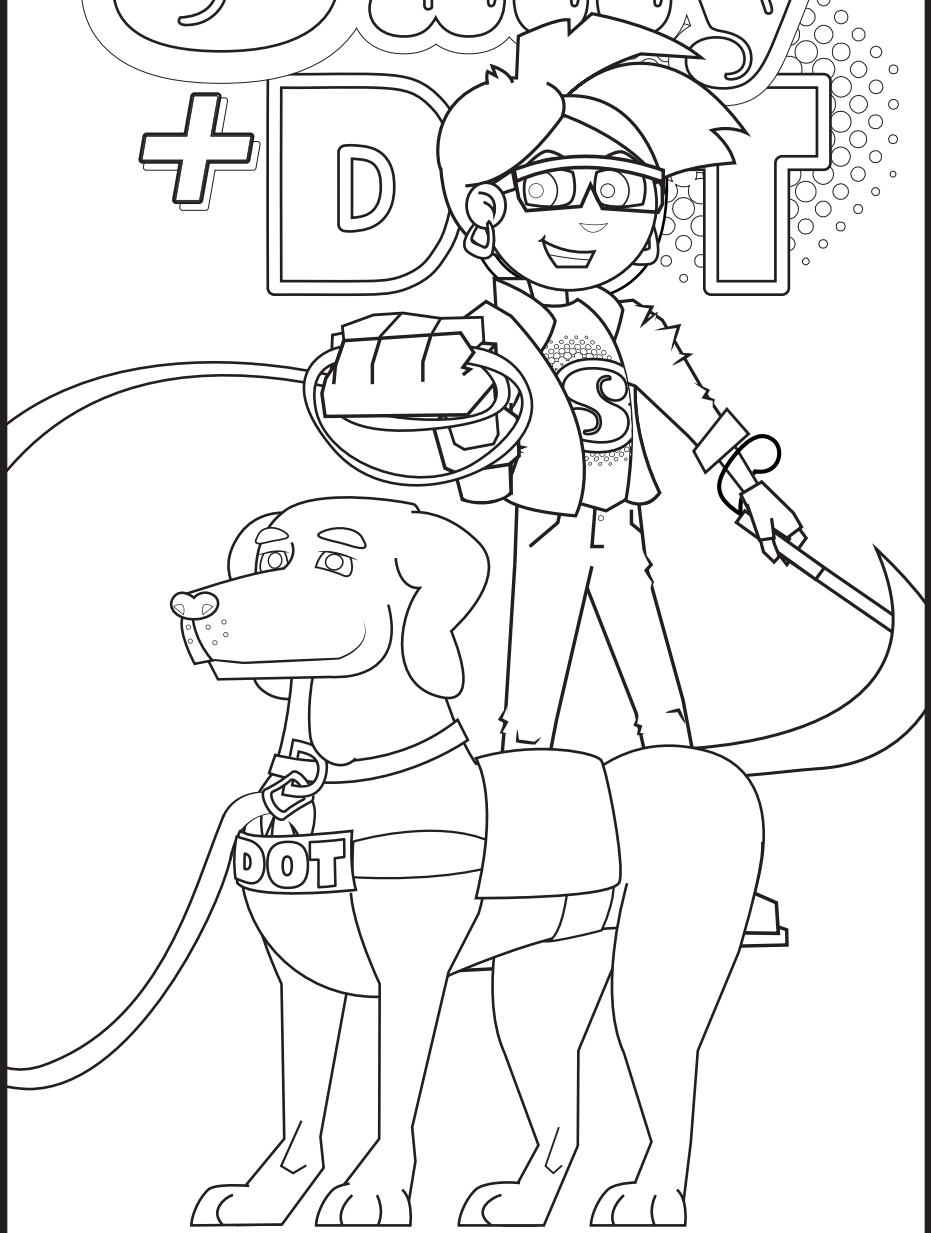
**SO I NEED TO LISTEN CLOSELY FOR TRAFFIC BEFORE I CROSS THE STREET.**

**BUT, EVEN IF YOU CAN SEE, YOU SHOULD ALWAYS LOOK LEFT, RIGHT, AND LEFT AGAIN BEFORE CROSSING!**

**WOOF! WOOF!**



# Sally + DOT



# ANSWER KEY

