

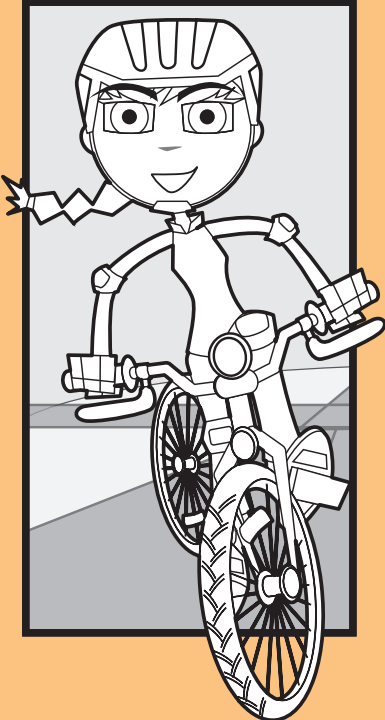
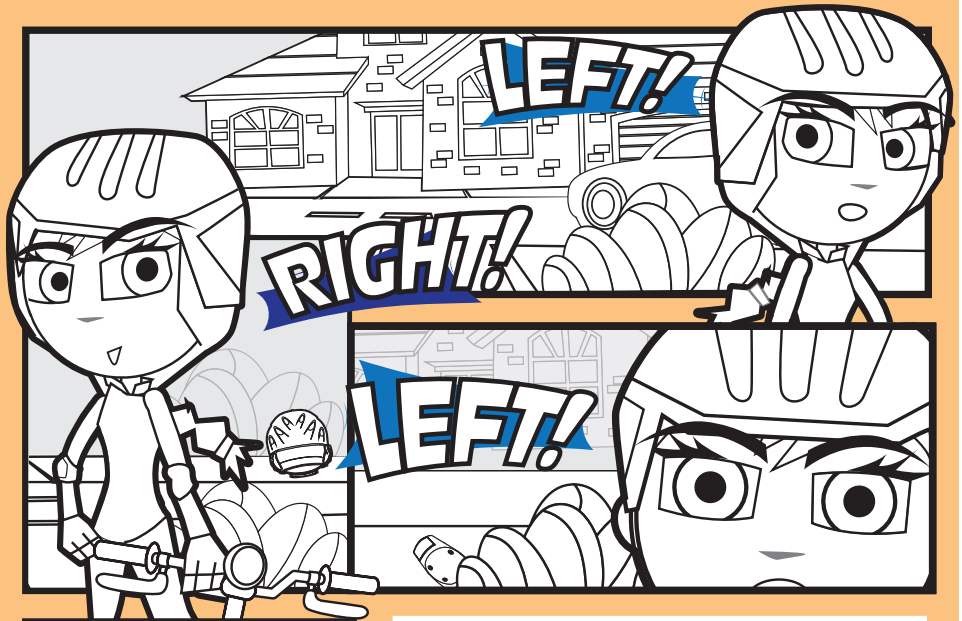
COLOR JANE!



CROSSING THE STREET

COLORING PAGE

Before entering traffic, stop and look left, right, left again and over your shoulder.



PARENT TIPS

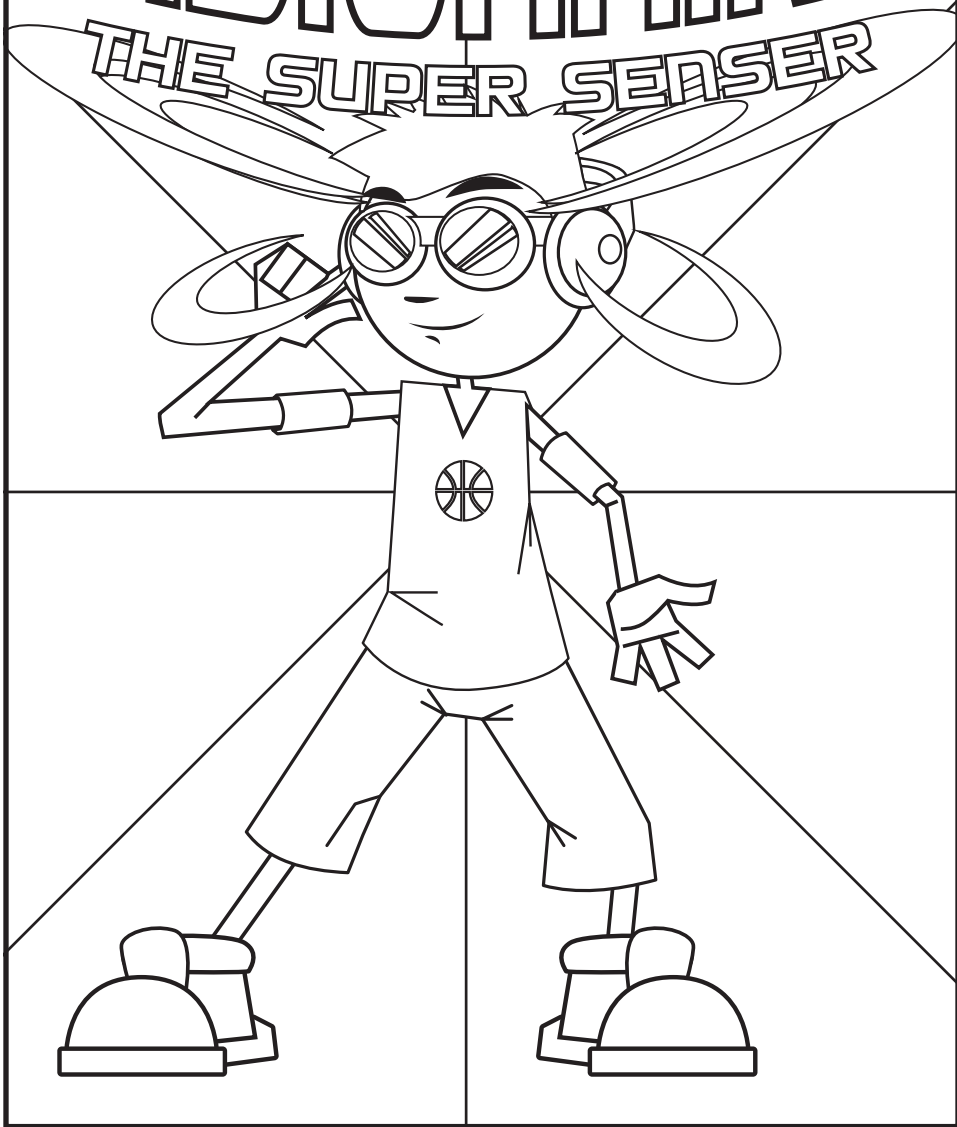
- ★ Bicycles are expected to follow the same rules of the road as motorists and ride in the same direction.
- ★ Watch for vehicles coming out of or turning into driveways.
- ★ Stop at the corners of sidewalks & streets to look for cars.
- ★ Make sure that drivers can see you before crossing.
- ★ Enter a street at a corner & not between parked cars.
- ★ Alert pedestrians that you are near by saying "Passing on your left," "Excuse me," or use a bell or horn.



**SAFETY
IS FOR
EVERYONE!**

VISIONAIRE

THE SUPER SENSER



WALKER & ZOM-B



LOTTE

